

MayShaw

Health and Aged Care for Living

We believe in

Celebrating life

every day.



CONTENTS

2 WELCOME TO MAY SHAW SCOTTSDALE

3 PAYING FOR AGED CARE

AMINYA

4 AMINYA REGULAR ROOMS

4 AMINYA COURTYARD ROOMS

5 AMINYA VALLEY VIEW ROOMS

ATTACHMENT: **FEES SCHEDULE**

FOR MORE INFORMATION

CALL (03) 63 52 9600

or email:

admin.scottsdale@mayshaw.com.au

Moving into residential care does not mean losing your independence or dignity.

Here at May Shaw, we believe that life is to be celebrated at every stage, and being proudly not for profit, our sole purpose is to work with you, so that you can enjoy life to the full, supported by quality, professional care.

If you are thinking of residential care, the only way to decide on a home is to arrange a tour, or even a stay.

So come and see us at May Shaw Scottsdale. We would love to show you how you can make our place **your** home.

Give us a call on (03) 6352 9600

Because aged care is supported by the Australian Government, they have a website dedicated to the questions that most people who are new to the system will want to ask.

You can view the website at MyAgedCare.gov.au or call 1800 200 422



Paying for Aged Care:

What is a Daily Accommodation Payment (**DAP**) and a Refundable Accommodation Deposit? (**RAD**)

Because aged care in Australia is largely funded by the Government, all residents entering an aged care facility are required to pay a fee called the Basic Daily Fee.

If your income and assets are more than the threshold set by the Government, you will be asked to pay for your accommodation with a lump sum payment, a rental-type payment or a combination of both.

The Basic Daily Fee.

This fee helps pay for your day-to-day services such as meals, cleaning, facilities management and laundry. Everyone is expected to pay a basic daily fee to cover these services. The basic daily fee is 85% of the single person rate of the basic age pension.

If you are required to make a payment towards your accommodation, you can choose the way you pay.

You can choose either:

1. A lump sum payment called a "Refundable Accommodation Deposit" ("**RAD**"). In the event you die, or leave the home the deposit is refunded to your estate, less any amounts you agree to have deducted.

2. A rental-type payment called a "daily accommodation payment" ("**DAP**"). A DAP is periodic payment charged monthly within the Basic Daily Fee. These payments are not refundable.

3. A combination of a RAD and a DAP.

You can find examples of combination payments at the back of this booklet.

*The Government stipulates you have 28 days from the day you enter care to decide on the method of payment. Until you decide how you would like to pay, you will need to pay your accommodation costs as a DAP. **Before making a decision about how to pay for your accommodation you should seek financial and legal advice to help you make the best decision.***

For residents who have low means, a lesser amount will be payable called an Accommodation Contribution. Whether you will be required to pay an Accommodation Payment or Accommodation Contribution will be assessed by the Department of Human Services or if applicable, the Department of Veteran affairs.

Respite care is charged as the Basic Daily Fee.



The view from the new Aminya Valley View rooms



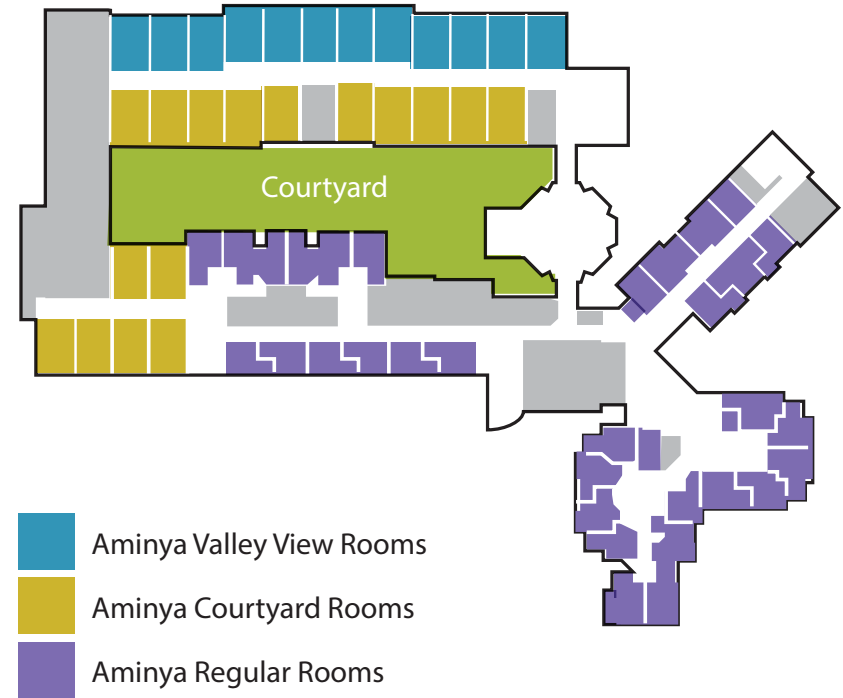
The new courtyard

Located in the town of Scottsdale in the heart of the North East of Tasmania, with magnificent views of the countryside and adjacent to Northbourne Park, May Shaw Scottsdale offers quality residential care and respite in a 60-bed purpose-built facility.

Our brand new extension to Aminya is due for completion early next year. All our new rooms have private ensuites.

All current Aminya Regular rooms have also been refurbished freshly painted with new carpets.

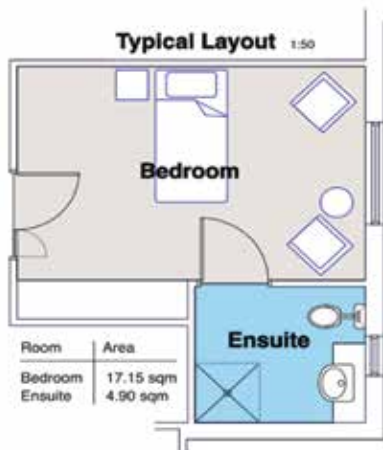
If you would like to arrange a tour of May Shaw Scottsdale, please call (03) 6252 9600 or email admin.scottsdale@mayshaw.com.au



Aminya Regular Room

Single room with private ensuite including:

- All rooms have views of the North-East countryside or the new Aminya courtyard
- Safety features including electric high/low bed, emergency call bells in the bedroom and bathroom, grab rails and wheelchair accessible
- Separate room panel heating or heat pumps for individual temperature control.
- floor-heating in bathrooms
- Built-ins over bed tables, bedside table
- Short distance to dining area



Aminya Regular Room

Your maximum
REFUNDABLE
ACOMMODATION
DEPOSIT (RAD)

\$275,000

Aminya Courtyard Room

Single room with views of the new courtyard and a spacious private ensuite including:

- Overbed tables, side cupboard, built in robe, storage and kitchenette
- Large flat screen TV, internet and wifi
- Separate reverse cycle heat pump
- All new safety features including new electric high/low bed, emergency call bells in the bedroom and beautifully appointed bathroom, with toilet lifts, grab rails and shower seat

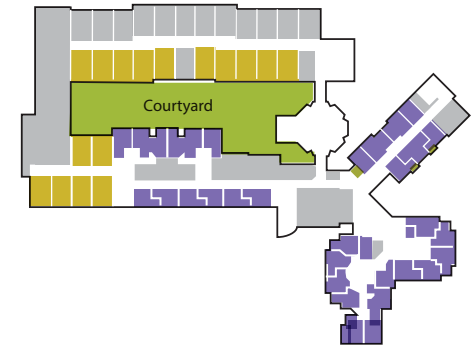


Aminya Courtyard Room

Your maximum
REFUNDABLE
ACOMMODATION
DEPOSIT (RAD)

\$430,000

■ Aminya Courtyard Rooms
■ Aminya Regular Rooms



Rather than pay a refundable deposit, you may choose to pay the Daily Accommodation Payment (DAP), or a combination of both.

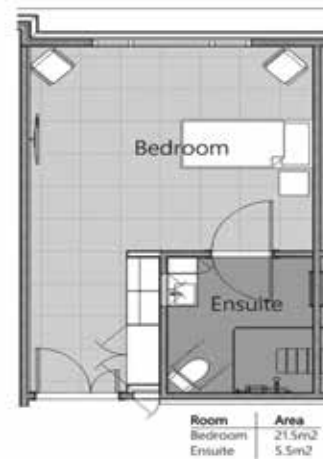
Please refer to the fee schedule attached.



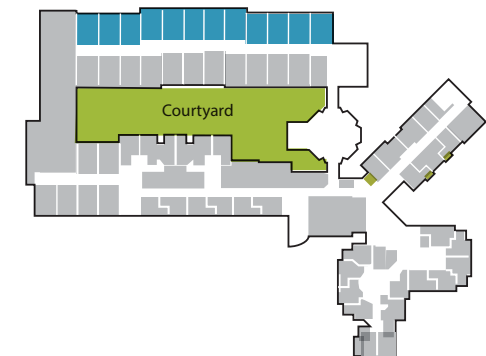
Aminya Valley View Room

Single room with stunning views of the rolling hills to the east of Scottsdale and a spacious private ensuite including:

- Overbed tables, side cupboard, built in robe, storage and kitchenette
- Large flat screen TV, internet and wifi
- Separate reverse cycle heat pump
- All new safety features including new electric high/low bed, emergency call bells in the bedroom and beautifully appointed bathroom, with toilet lifts, grab rails and shower seat
- Heated bathroom floors
- Short distance to dining area



 Aminya Valley View Rooms



Aminya Valley View Room

Your maximum
REFUNDABLE
ACCOMMODATION
DEPOSIT (RAD)

\$460,000

Rather than pay a refundable deposit, you may choose to pay the Daily Accommodation Payment (DAP), or a combination of both.

Please refer to the fee schedule attached.





SCHEDULE 4
 FEES AND CHARGES as at 01/01/2021
SCOTTSDALE - AMINYA

*Commonwealth
 MPIR = 4.01%
 (Maximum Permissible Interest Rate) as at
 01/04/2021

Aminya Regular	
Maximum Refundable Accommodation Deposit (RAD) <i>or</i> Maximum Daily Accommodation Payment (DAP) *	\$275,000 <i>or</i> \$30.21
Example of a combination payment 55% of the accommodation payment as a refundable deposit (RAD) and 45% of the accommodation payment by periodic daily payments (DAP)	\$150,000 <i>and</i> \$13.73

Aminya Courtyard	
Maximum Refundable Accommodation Deposit (RAD) <i>or</i> Maximum Daily Accommodation Payment (DAP) *	\$430,000 <i>or</i> \$47.24
Example of a combination payment 55% of the accommodation payment as a refundable deposit (RAD) and 45% of the accommodation payment by periodic daily payments (DAP)	\$236,500 <i>and</i> \$21.25

Aminya Valley View	
Maximum Refundable Accommodation Deposit (RAD) <i>or</i> Maximum Daily Accommodation Payment (DAP) *	\$460,000 <i>or</i> \$50.53
Example of a combination payment 55% of the accommodation payment as a refundable deposit (RAD) and 45% of the accommodation payment by periodic daily payments (DAP)	\$253,000 <i>and</i> \$22.74

MayShaw

Health and Aged Care for Living

FOR MORE INFORMATION

CALL (03) 63 52 9600

or email:

admin.scottsdale@mayshaw.com.au